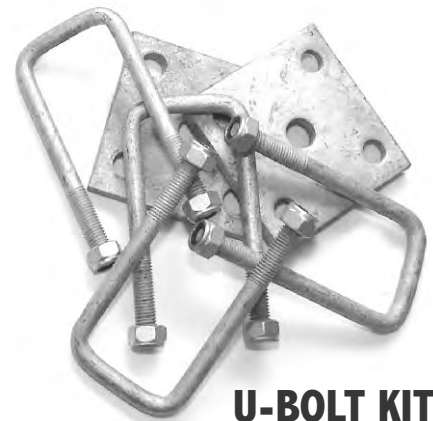


CM have a wide range of galvanised U-bolts and fish plates supplied in kits or as loose parts.

NOTE: All U-Bolts must be retightened after the first 100km of use.

U-BOLT KIT PART NO	U-BOLT PART NO	TYPE	A	B	C
TE7UBK01	TE7UB01	Square	51mm	57mm	12mm
TE7UBK05	TE7UB05	Square	51mm	100mm	12mm
TE7UBK06	TE7UB06	Square	51mm	114mm	12mm
TE7UBK08	TE7UB08	Square	51mm	127mm	12mm
TE7UBK09	TE7UB09	Square	51mm	140mm	12mm
TE7UBK16	TE7UB16	Square	65mm	115mm	12mm
TE7UBK17	TE7UB17	Square	65mm	130mm	12mm
TE7UBK18	TE7UB18	Square	65mm	152mm	12mm
TE7UBK19	TE7UB19	Square	65mm	180mm	12mm
TE7UBK22	TE7UB22	Square	75mm	120mm	12mm
TE7UBK24	TE7UB24	Square	75mm	150mm	12mm
TE7UBK25	TE7UB25	Square	75mm	190mm	
TE7UBK26	TE7UB26	Round	51mm	114mm	12mm
TE7UBK27	TE7UB27	Round	51mm	127mm	12mm
TE7UBK28	TE7UB28	Round	51mm	140mm	12mm
TE7UBK36	TE7UB36	Round	65mm	140mm	12mm
TE7UBK39	TE7UB39	Round	65mm	178mm	12mm

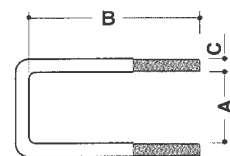
FISH PLATE PART NO	D	E
TE7UBBP45	50mm	50mm
TE7UBBP63	50mm	65mm
TE7UBBP50-75	50mm	78mm
TE7UBBP60-75	60mm	75mm



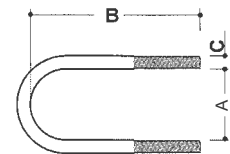
U-BOLT KIT

Consists of: 4 x U-bolts, 2 x Fish Plates and 8 x Nyloc Nuts

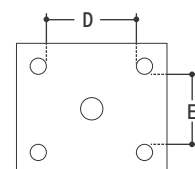
SQUARE U-BOLT



ROUND U-BOLT



FISH PLATES



SPRING FITTINGS SHACKLES

TE197SH1 45mm wide x 1/2" diameter hole

TE197SH2 51mm wide x 16mm diameter hole

TE197SH3 51mm wide x 16mm diameter hole (Acts as tandem centre shackle/slipper)

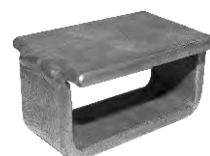


SLIPPERS

TE197SL1 45mm (w) x 24mm (h)

TE197SL2 51mm (w) x 29mm (h)

TE197SL2RS 51mm (w)



TE197SL1 & TE197SL2



TE197SL2RS

SHACKLE BOLTS

TE197SB1 Galvanised shackle bolt and nylock nut M16 x 90mm



PLEASE NOTE: ALL SPECIFICATIONS AND DIMENSIONS ARE SUBJECT TO CHANGE WITHOUT PRIOR NOTIFICATION